



Kingswood

Inspiring Learning

https://www.youtube.com/channel/UCy0__ghMVMWC_5THw2iogg

Learning Outside the Classroom

Shawlands Primary School

25th – 27th May 2022

Staffing

Lead: Mr Thompson

Miss Marshall and Mrs Pease,
Miss Billington, Mr Hemingway,
Miss Lindley and Mrs Watson

Introduction to Kingswood

We support teachers in bringing learning to life and with 30 years' experience, we know what works and we are proud to deliver immersive learning at it's very best.

- Working with 3,500 schools per year and 130,000 students, we are a leading trusted provider of residential trips
- We aim to instil self confidence and a sense of achievement through a positive experience which is educational and enjoyable, challenging and rewarding
- **We know what we are doing!**
 - Founding members of the British Activities Providers Association (BAPA)
 - We hold a 'Learning Outside the Classroom' quality badge and have full accreditation with all relevant agencies



Your centre – Colomendy

Colomendy is perfect for schools and groups looking for an immersive outdoor adventure. This 130 acre site is set in an Area of Outstanding Natural Beauty and a Site of Special Scientific Interest. Deep in the valley surrounded by scenic hills and woodland, brimming with wildlife and with views of Moel Famau.

Loggerheads Country Park is opposite the centre and there are plenty of opportunities to venture off-centre to explore the hills and woodland.

Your centre – Colomendy

- Outdoors: Activities integrated into the stunning woodland, including three huge climbing and abseiling towers, high and low rope activities, a 3G swing, a 200 metre giant zipwire, and an exceptionally realistic caving system built into a natural rock seam
- Indoors: Spacious sports hall for team games, fencing and recreational activities
- Watersports: Purpose built watersports lake for raft building, kayaking and canoeing
- Gift shop: Our on-site shops sell snacks and drinks, as well as postcards, souvenirs, games and mementos
- Other facilities: Diner, chill out areas, party leader lounges and classroom spaces
- Security: the centre site is fully secure with boundary fencing, security gates and CCTV
- Please note we have limited to no mobile access in most areas across the site, but we have landlines available for use in our reception area



A day full of fun

A typical day at Kingswood runs as follows:

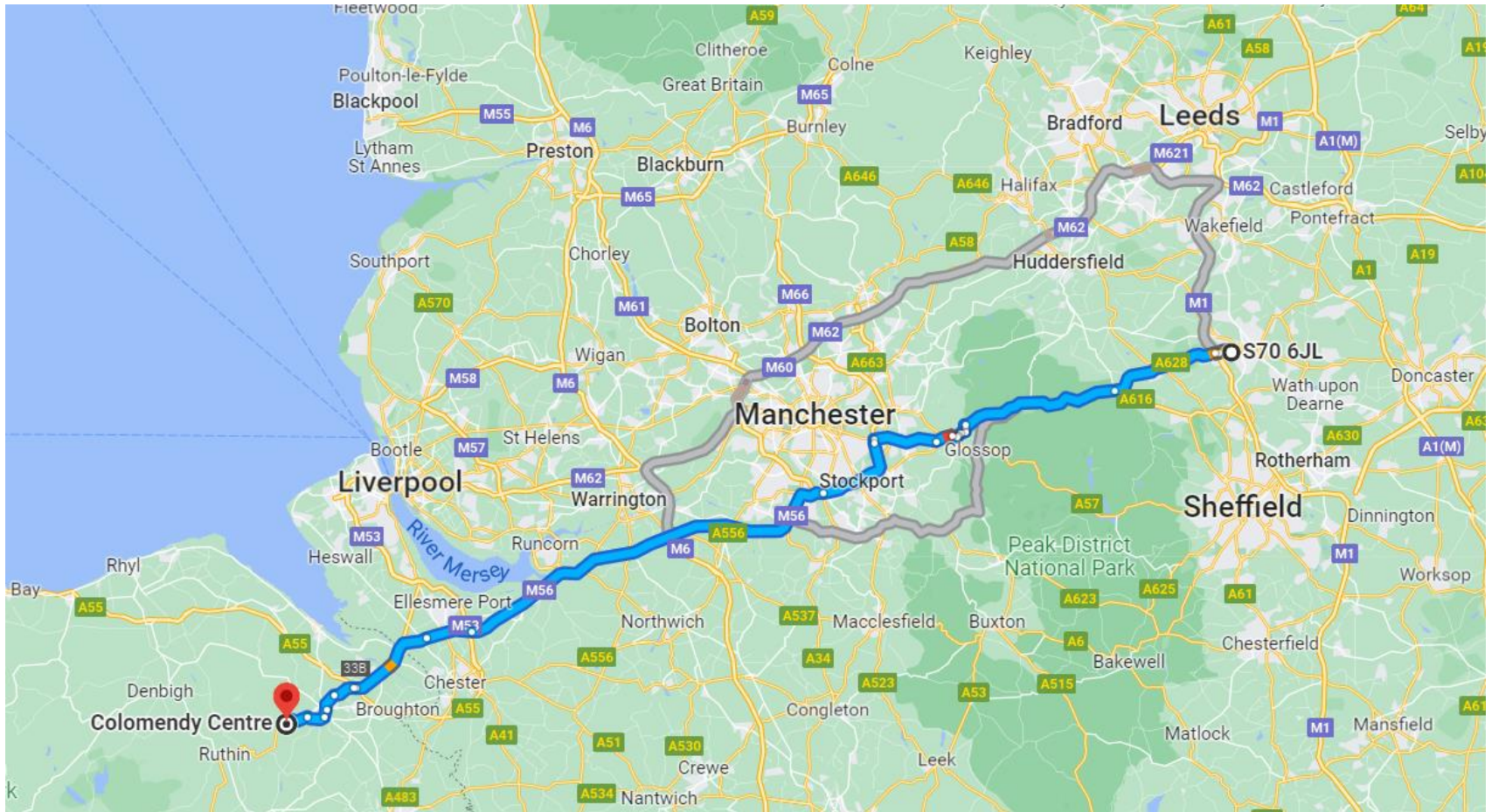
- Breakfast is served between 7.30am and 9am
- First activities start around 9.30am
- 10 minute refreshment break
- Lunch time allocation between 12pm and 2.30pm
- A full afternoon of activities
- 10 minute refreshment break
- Evening meal time allocation between 5pm and 7pm
- Evening entertainment from 7.45pm followed by hot chocolate (on request)
- Lights out by 10.15pm

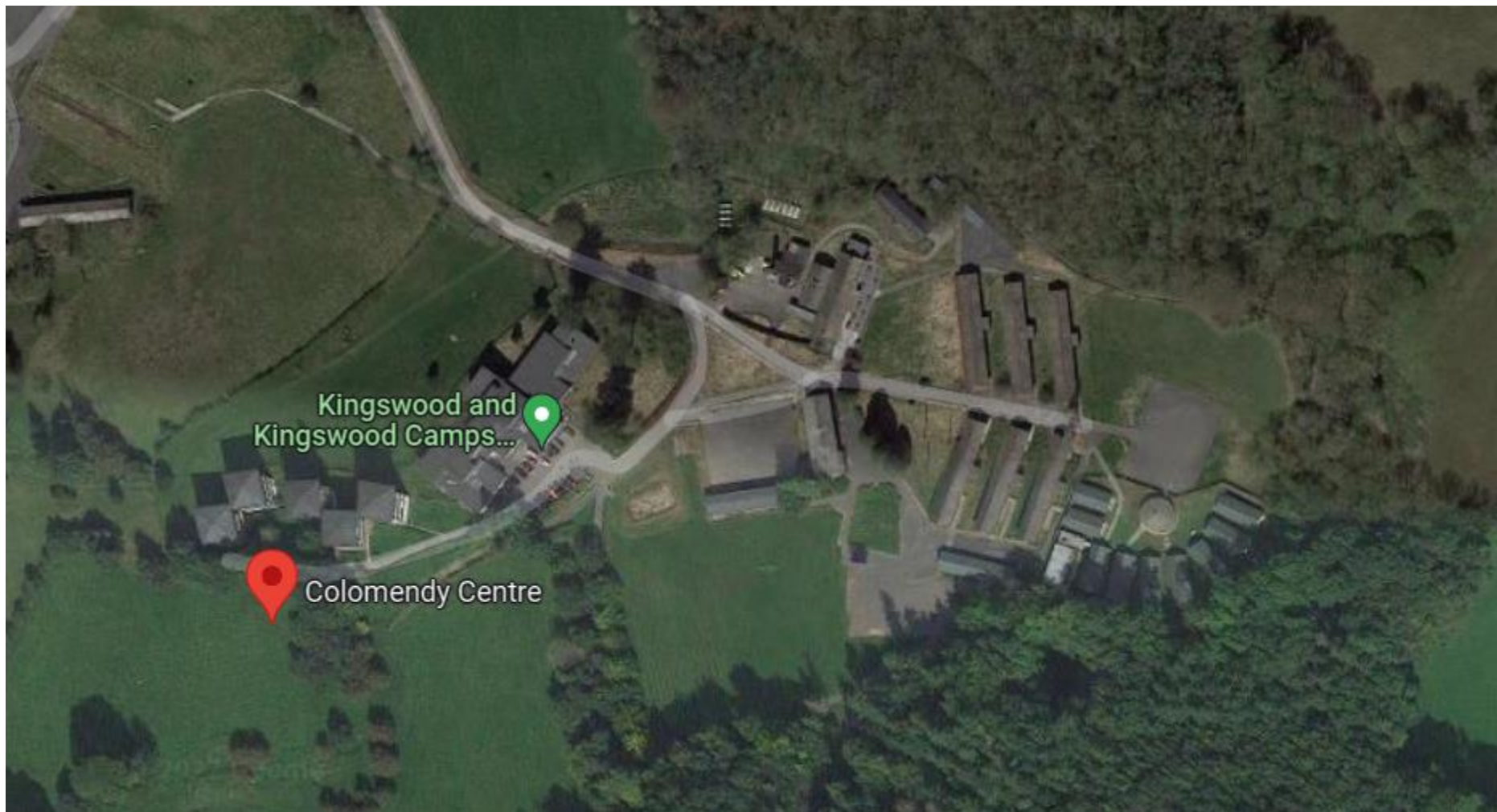


Kingswood will create a programme to meet specific objectives, needs and learning outcomes.

- Six activity sessions per full day plus one final evening session
- Fully qualified Kingswood activity instructors lead all activities
- Students are encouraged and praised during activities but are NEVER forced to take part if they are not comfortable doing so

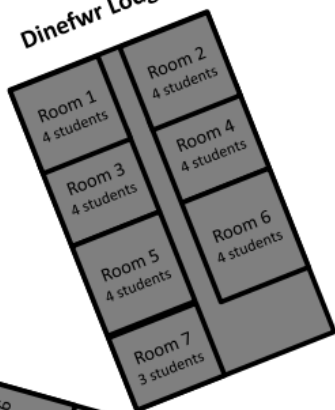
While other groups will also be present on centre during our stay, all programmes and activities are conducted separately, unless otherwise stated.



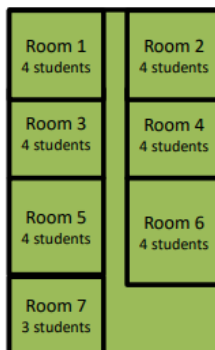


As part of our safeguarding process please ensure the main party leader can provide photo ID on arrival. Party Leader's will also be asked to confirm that all adults who are part of the party have been DBS checked and are suitable to work with children.

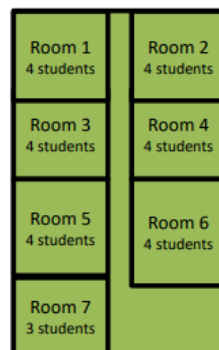
Dinefwr Lodge



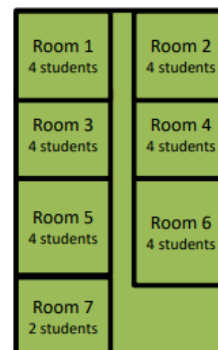
Chirk Lodge



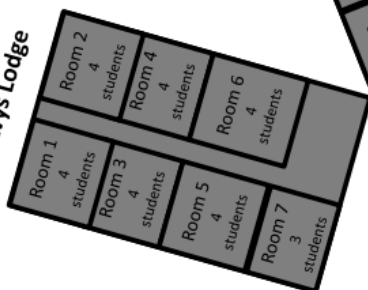
Pembroke Lodge



Chepstow Lodge



Powys Lodge



Harlech Lodge



Caernarfon Lodge



YURT

Social area with log burning fire for use by all guests staying in the Adventure Lodge Accommodation

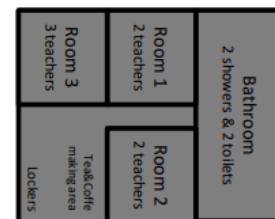
Key

- Young people
- Not allocated
- Adults
- Other guests

Colomendy Lodge



Cardiff Lodge



Your group has been allocated the following compartments in **Adventure Lodges**

Group Name: Shawlands Primary School

Date of Visit: 25/5/22 – 27/5/22

Adventure Lodges

Our Adventure Lodges are the highest quality safari tents, providing a comfortable and secure base for your group throughout your stay. The lodges sites offer a close community feel with campfire areas, perfect for team bonding in the evening.

- Bespoke branded timber furniture and the same high quality bedding that we have in our residential accommodation, complete with pillows and duvets
- A solid timber floor base, plus an undercover veranda area outside the entrance
- A central space for downtime
- Mains power supplied to each Lodge for charging phones and electrical accessories, etc.
- Lodges for Party Leaders include kitchenettes with tea and coffee making facilities and small fridge for refreshments and storing medicines

Dedicated toilets and shower areas at a ratio of one shower per 10 young people, plus separate facilities for Party Leaders.



What to take/wear

- Children will need long sleeved tops and long trousers for most activities, which will be outside so a waterproof would also be advisable – layers too!
- Spare trainers
- PJs
- Toothbrush
- Sweets

- Water activities – spare clothing

- A black bag to put all worn clothes in
- No need to take bedding
- Take a towel 😊
- Please label clothing

- £5-£10 spending money

Food glorious food!

It's important for students to maintain high energy levels throughout your stay, so three freshly-prepared, healthy buffet style meals are served daily in the communal dining area.

- All meals are nutritionally balanced and meet the latest Government standards on childrens' meals
- A varied choice is always offered, with both hot and cold meals, a salad bar, at least one vegetarian option and yes, sometimes even chips!
- Plenty of juice and water is available at all times
- Most dietary requirements can be catered for as long as we are told in advance - forms will be issued to the group prior to your visit for this purpose and to establish any medical needs



* BREAKFAST *

Cereals #/I
Sausage #/I
Vegetarian sausage #/I
Bacon
Hash brown
Scrambled egg #/I
Baked beans
Yoghurt V
Fruit compote
Toast #/I
Seasonal fresh fruit

ALLERGENS



*Please see food labels for allergens
**Vegan options are available
△ May contain traces of other allergens - please speak to the Head Chef if concerned

KINGSWOOD KITCHEN

LUNCH

Shepherd's lamb pasty △ #
Hot dogs △ #
Cheese and onion pasty V #/I

All served with...
Skinny fries
Baked beans
Freshly prepared salad*
Soup of the day*

>> DINNER <<

Hunters chicken with bacon and
cheddar cheese topped with a BBQ sauce #/I
Crispy chicken nuggets #/I
Crispy vegan nuggets VE #

All served with...
Herb diced potato
Broccoli and carrots
Freshly made salad available daily*

SPECIALS

Chicken Shack

Marinated chicken
served with corn
on the cob and
smoky rice △

Marinated Quorn™ escalope
and corn on the cob served
with smoky rice △ V #/I
Vegan options are available

DESSERT

Frozen strawberry yoghurt** V I

Bedtime routine

To finish off each day, hot chocolate is served before students return to their dorms. Plenty of sleep is required to recharge the batteries, so lights are usually turned out by 10:00pm.



Sleeping – a home away from home!

- All residential dormitories are warm, comfortable and 100% secure
- Girls and boys sleep in separate areas and teachers rooms are located close by to allow for plenty of close supervision
- All bedding is provided on centre - one of the very first tasks for all students is making up their own beds!
- Separate showers and toilet facilities are available for girls and boys
- DORM CHECK PRIZE!



Safety and wellbeing

We know how daunting it can be letting your child go on a residential visit, so we do everything we can to make it a safe and enjoyable experience for all.

Our policies and procedures are designed to make sure we adhere to the highest safety standards at all times:

- Continual safety and first aid training for all staff
- Regular checks on equipment before and after every activity session
- Qualified First-Aider on centre 24/7
- All staff are fully DBS checked

We create a warm, supportive environment for students so they quickly feel at home. All our activities are progressive, allowing students to join in at whatever level they're comfortable with.

We have found the best way to help children cope with being away from home is to keep them busy, having fun from dawn 'til dusk.

Kingswood cannot guarantee 100% safety for personal items brought onto centre and they will not be covered by insurance. It is therefore advisable to leave valuables – cameras, mobiles, iPods, MP3 players, computer games, jewellery - at home. A clearly named disposable camera is acceptable.



Forms

Before you leave today please can you complete the medical forms and the photo consent form.

Photo consent.

- Photography consent – to allow us and Kingswood to post on social media – this way you will be able to keep up to date with what's going on. On day 1 we will #groupname so that it is easier to follow your child's group

Medical consent.

- Page one- contact information plus emergency medical consent.
- Page two- Calpol consent
- Page three – any medical information such as allergies, medical conditions, sleep walking/nightmares etc.
- Travel sickness tablets need to go on page 3. You can give the one for travel there on the morning and then include one for the travel back as explained below.
- The first 3 need completing by everyone.
- Page four - If your child has prescribed medication, please take complete this form at home and return it completed, on the morning along with the labelled medication in a labelled bag.

Any questions?